

CAPITAL MANDARIN'S CAMPUS IN GAOBEIDIAN

LIVE AND GO TO LESSONS IN THE SAME BUILDING! LEARN CHINESE AND HAVE LOADS OF FUN!



ROOMS

- SINGLE
- DOUBLE
- QUADRUPLE
- FAMILY

FACILITIES & AMENITIES

- KITCHEN
- BATHROOM
- WI-FI
- TV
- WASHING & DRYING MACHINES
- AIR CONDITIONING

TOTAL
CHINESE
LIFESTYLE
IMMERSION



CapitalMandarin

VISIT WWW.CAPITALMANDARIN.COM OR SEND AN EMAIL TO INFO@CAPITALMANDARIN.COM

GAOBEIDIAN CAMPUS:



Capital Mandarin School opens a door for you to study Chinese in China, immerse yourself in both ancient and contemporary Chinese culture, travel and explore the amazing city of Beijing!

Located in Gaobeidian, the campus is part of Gaobeidian Village, a place with lots of history and renewed tradition. While embracing the traditional Chinese architectural style, the campus is also equipped with all the facilities that are considered standard in the West.

Our campus makes living in Beijing and going to lessons easy. Live comfortably and save time by staying here.

THE DORM



There are Single, Double and 4-Bed-Rooms available in each floor equipped with an A/C. In the living room, Cozy couches, coffee tables and TV sets serve as relaxing and social areas for our students.

FACILITIES & EQUIPMENT



Each floor has a fully equipped kitchen and two bathrooms. Additionally, there is a washing machine, drying machine and hanging area on the 2nd and 3rd floors. Wi-Fi is available on all floors.

CLEANLINESS & SERVICE



A daily cleaning service makes sure that all floors and facilities are kept clean and hygienic. There is also at least one teacher supervising the campus 24/7.



PUBLIC TRANSPORT: SUBWAY & BUS

15 minute walking distance from the subway station and 2 from the bus stop. The city center is only a few stops away.



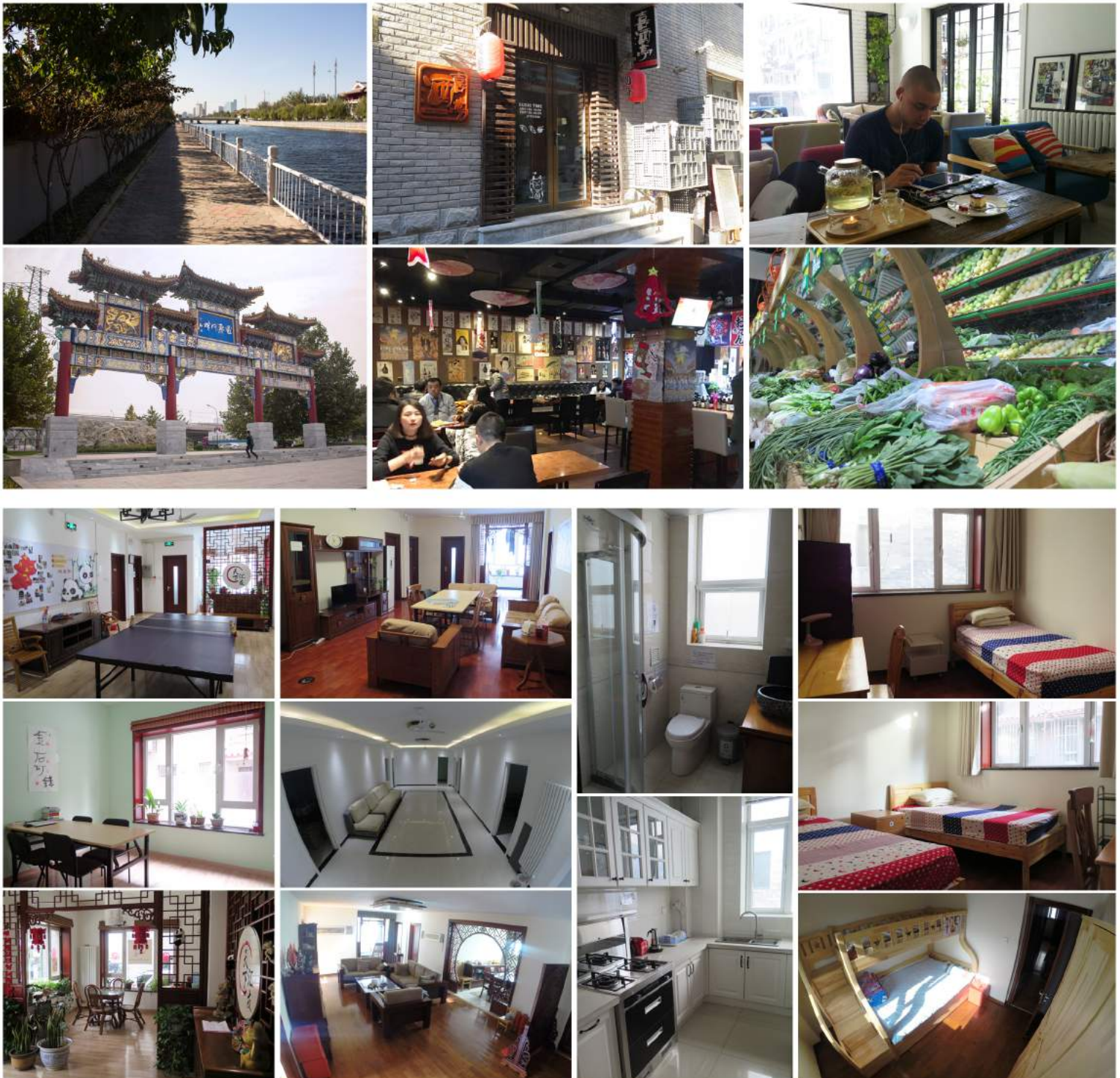
FOOD: CHINESE DIVERSITY

The area is littered with restaurants that serve noodle, rice and vegetarian dishes. Western food can be delivered to the campus.



AREA: GAOBEIDIAN CULTURE VILLAGE

The area is autonomous, safe and not far from attractions like the Water Temple and its park, the Beijing-Hangzhou Channel, the furniture street, the history and art museums, calligraphy work-shops, etc.





BASEMENT



GROUND FLOOR



SINGLE ROOM



DOUBLE ROOM



COMMON ROOM

GAOBEIDIAN CAMPUS:

HUI HE SOUTH STREET, GAOBEIDIAN ROAD,
CHAORYANG DISTRICT, 100022, BEIJING CHINA